

soilessentials

FARMING SMARTER

precision farming solutions

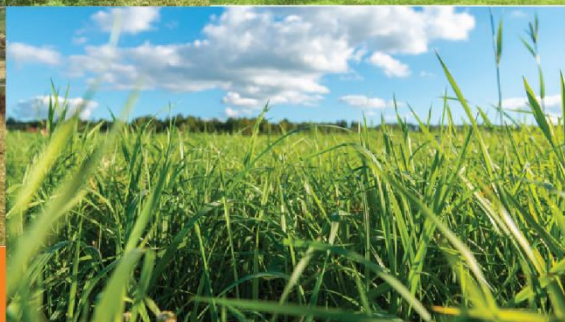
GrassRight
PRECISION SOIL SAMPLING

Healthy, productive animals are
well fed on good grass grown
on great, well managed soils.

GrassRight helps you get the fundamental building
blocks just right with a select range of sampling options.



Swift, efficient and
accurate service.



By farmers, for farmers.

Providing the foundations for higher quality meat and milk

Nutrient availability is at its best when pH is just right. We will sample your fields in detail for pH and at sensible levels for micro-nutrients. Lime can be applied variably* and the correct nutrients applied for each field too - *all for great growing grass.*

*Gold and Silver only

SOIL SAMPLING PACKAGES

Introducing three tier grassland soil sampling packages, plus a DIY option.

GOLD

In-depth pH sampling for grass in rotation

pH: 4pH/ha
1 sample (12 cores) every quarter hectare (4pH/ha)



Benefits:

Detailed analysis, greatest savings in lime
Boost to field yield.

Best suited for:

Rotational grass

SILVER

Sampling for improved grassland

pH: 2pH/ha
1 sample (12 cores) every half hectare (2pH/ha)



Benefits:

Show areas that need improved and overall performance of the field.

Best suited for:

Standard improved grass

BRONZE

Overall field view to get a field average

Bronze 1pH/field
1 sample made up of many cores covering a whole area



Benefits:

Overall field performance

Best suited for:

Long-term grass

DIY

Customer collects own soil

See our How-to DIY Guide

Benefits:

Overall results for sampled area

Best suited for:

Long-term grass and poor areas

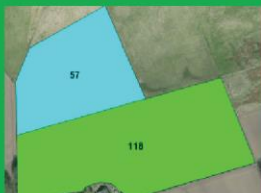
Additional:

Add micro-nutrients over and above the routine analysis (P, K, Mg, Na, Ca, Average pH). These could be Zinc and Iron. **Further nutrient analysis of soil available to all packages:**

Nutrients: Per zone or per field -for Gold, Silver & Bronze packages

Per field/zone:

- Routine (Ru) - P, K, Mg, Ca, Na (Phosphorus, Potassium, Magnesium, Calcium, Sodium)
- Routine (Ru) + Cu (Phosphorus, Potassium, Magnesium, Calcium, Sodium + Copper)



Start the conversation

Call 01356 650459 / 07824 617153 . Email: enquiries@soilessentials.com

www.soilessentials.com