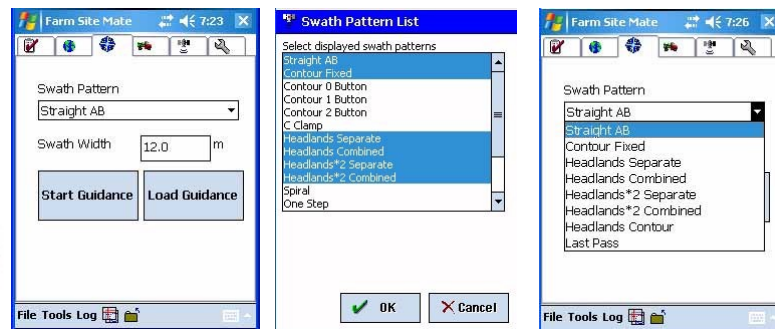




Guide Mate adds an on-screen lightbar and steering needle and is fully integrated with **Site Mate**. Users can quickly flip between the lightbar display of **Guide Mate** and a 2D or 3D coverage map view generated with **Site Mate**



Product Features include:

- Easy to follow guidance screen with a lightbar and intuitive steering needle
- Vary guidance sensitivity through 'Look Ahead'
- 'Mark/Return' feature to pick up previous location after break in work
- Headland guidance indications and numerous driving patterns
- Driving patterns include Straight A-B, Contour, Headlands options and more
- Switch to 'Last Pass' pattern at any time with the touch of a button
- Product usage displayed when used with either **Trac Mate** or **Site Mate VRA**
- Enter a value for on-screen 'Headland Warning'
- Runs on any Pocket PC operating a version of Windows
- Works with any GPS receiver that outputs NMEA 0183 (**note that at least 5 hz output is recommended for best results**)
- No external light-bar required (bluetooth MicroGuide lightbar option available)
- Can be used in conjunction with Raven lightbars with options to control the lightbar
- All guidance jobs and Site Mate coverage maps logged in ArcView Shape file format
- Upgrade Site Mate Basic to Site Mate Agronomy for advanced sampling features or Site Mate VRA to log and vary application rates from a wide range of in-cab controllers.

